

ABECEDARIO

A a Aa



AUTO

B b Bb



BEBÉ

C c Cc



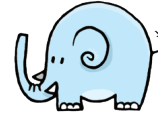
CASA

D d Dd



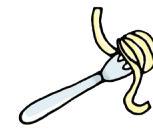
DADO

E e Ee



ELEFANTE

F f Ff



FIDEOS

G g Gg



GATO

H h Hh



HELADO

I i Ii



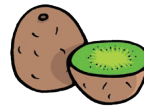
ISLA

J j Jj



JUGO

K k Kk



KIWI

L l Ll



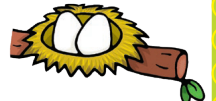
LEÓN

M m Mm



MONO

N n Nn



NIDO

Ñ ñ Ññ



ÑOQUIS

O o Oo



OSO

P p Pp



PATO

Q q Qq



QUESO

R r Rr



RATÓN

S s Ss



SAPO

T t Tt



TORTA

U u Uu



UMA

V v Vv



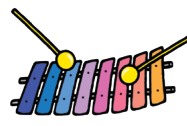
VELA

W w Ww



WAPITÍ

X x Xx



XILOFÓN

Y y Yy



YOGUR

Z z Zz



ZORRO

